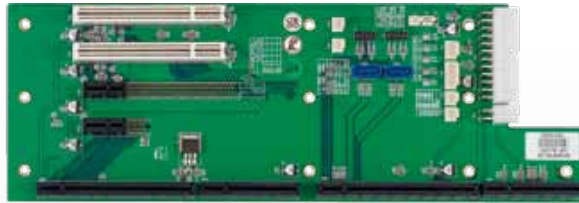


# NBP 0522

PCIMG 1.3 w/ SBC slot, 1 x PCIe x16, 1 PCIe x1, and 2 x PCI slot



## Main Features

- Designed for PEAK870 and PEAK872
- Support 1 PCIe x16/1, 1 PCIe x4/1 and 1 x Full-sized PCI Add-on card
- Compatible with PCIMG 1.3 board

## Specifications

### System Architecture

- For 5-slot chassis

### Dimensions

- 317.5mm(W) x 110.7mm(L)

### Slots

- PICMG 1.3 (SBC slot)
- 1 x PCIe x16 (default as PCIe x1)
- 1 x PCIe x4 (default as PCIe x1)
- 2 x PCI 32bit/33MHz

### Power Input

- 1 x 24-pin Power connector

### Environment

- Operating temperature: 0°C to 60°C
- Storage temperature: -20°C to 80°C
- Relative humidity:  
Operating 10% to 90%, non-condensing  
Non-operating 5% to 95%, non-condensing

### Certifications

- CE approval
- FCC Class A

## Ordering Information

- **NBP 0522 (P/N: 79N0052200X00)**  
PCIMG 1.3 w/ SBC slot, 1 x PCIe x16, 1 PCIe x1, and 2 x PCI slot

## Dimension Drawing

